



SWISS MADE



AVAA C214

ACTIVE BASS TRAP

The smartest way to improve your room acoustics.

The AVAA C214 is an active bass trap that reduces standing waves and room modes in real time.

It uses advanced DSP control and an acoustic system to absorb low frequencies – no calibration, no setup, just plug it in.

Instantly experience tighter, cleaner, and more accurate bass.

HOW DOES THE AVAA C214 WORK?

The AVAA C214 acts like an **acoustic black hole** for low frequencies.

It **detects the variations of air pressure** in the room using a built-in microphone.

Two powerful DSPs then drive transducers that counteract these pressure fluctuations, effectively **absorbing energy** between **15 Hz and 160 Hz**. IT IS **NOT** NOISE CANCELLING.

Unlike digital EQ correction, **the AVAA doesn't process your audio signal** - it works directly on the acoustic field of your room without changing the sonic behaviour of your speakers.

The result is a **smoother, more balanced low end** and a room that sounds as if it were much larger.



The AVAA C214 is not only an intelligent acoustic absorber - it is also a **connected device** that integrates seamlessly into **modern living room, studio and installation environments**. Through its built-in network interface, **multiple AVAAs** can be **controlled** remotely from a compatible **iOS** or **Android** device.

Whether your AVAAs are installed behind acoustic curtains, across several rooms, or in a large multi-channel setup, remote control ensures **you always have full command** over their performance **without ever leaving your listening position**.



- Simply find the right spot(s).
 - Plug in and turn on.
 - Enjoy.
- !!! No calibration needed !!!

WHERE TO PLACE THE AVAA?

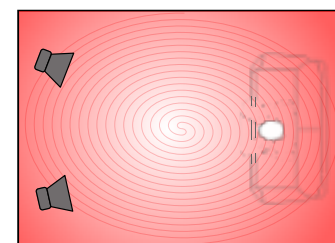
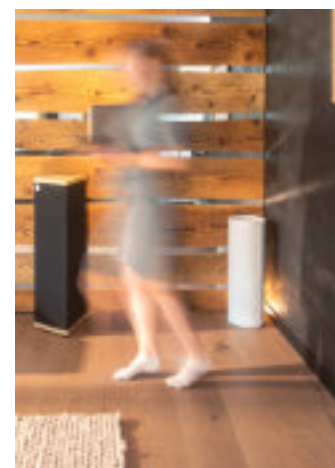


Low frequencies tend to build up **along walls** and **in corners**.

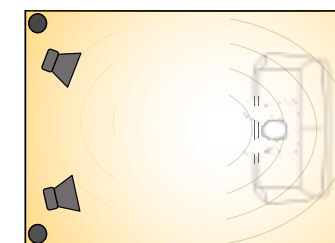
The AVAA is most effective when placed in these **high-pressure zones**.

Start with two units **behind the loudspeakers** or in a rear corner.

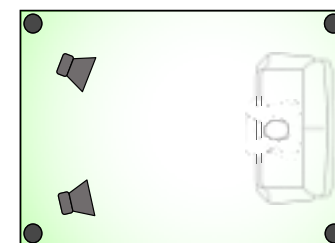
For **symmetrical setups** or larger rooms, add additional units for even coverage.



Room without any treatment.
Bass resonates in the room.



Room with 2 AVAAs behind the speakers.
Bass resonance is reduced by 30-60%.



Room with 4 AVAAs (1 in each corner).
Direct sound is better perceived. Almost no bass resonance.

Advantages with AVAAs C214:

- Less resonance from low frequencies in the room.
- Less masking effects (voice and other instruments become clearer).
- Better stereo imaging.
- Less ear fatigue.

Applications

- Recording and mixing studios.
- Mastering suites.
- Hi-Fi listening rooms.
- Home cinemas and control rooms.

Option

- Mounting Feet. Fix the AVAA C214 on the wall or to the ceiling.



HEAR THE DIFFERENCE

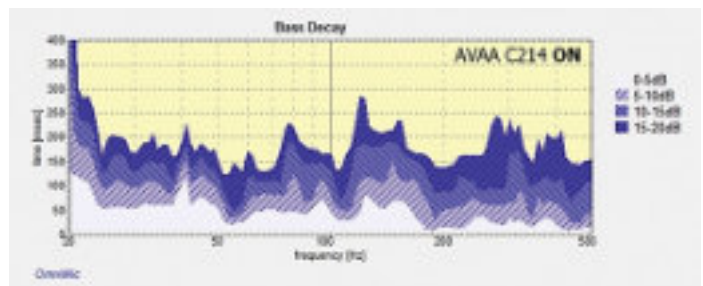
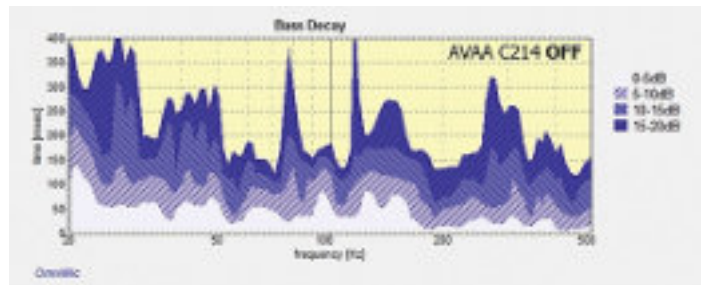
Engineers, producers, and audiophiles around the world rely on the AVAA C214 to control the low end with precision.

The improvement is immediate and measurable - tighter bass, improved translation, and a more natural soundstage.

"Bass was better balanced and more natural... more open and detailed." - Tom Martin, The Absolute Sound

"These really work! When I switched in the AVAA traps, space expanded in all dimensions." - Kalman Robinson, Stereophile

"I've never had such even, impacting, punchy, and clear bass. Measurements confirm that three AVAA traps are more effective than six 6-inch thick passive traps, and without the overdamping problems that the passive traps have." - Bob Katz, Stereophile



EXPERIENCE THE AVAA C214 TODAY.

VISIT WWW.PSIAUDIO.SWISS OR CONTACT YOUR LOCAL PSI AUDIO DEALER.

